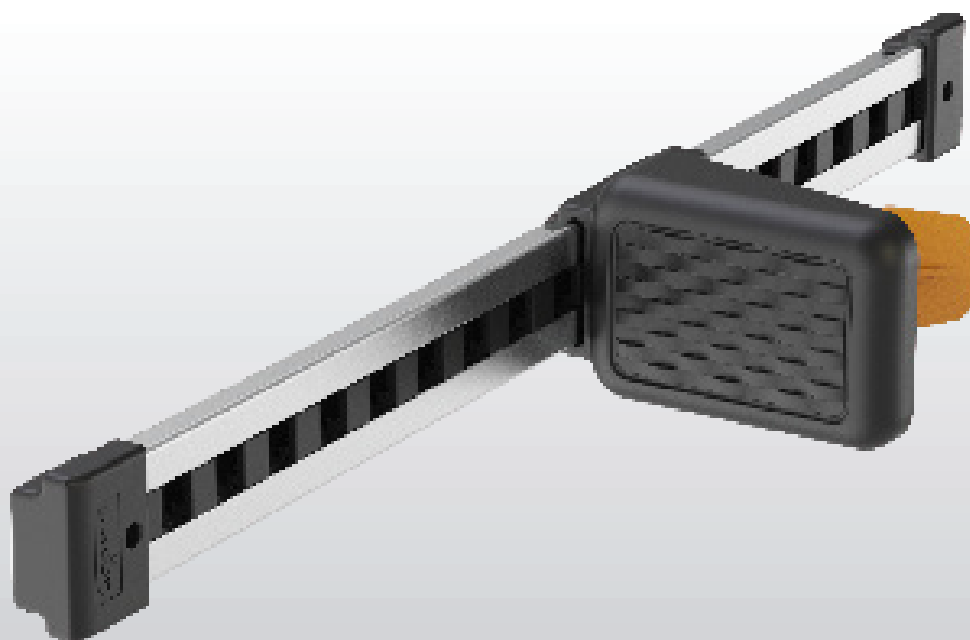


KS FOOTREST 3,ALUMINIUM

STRONG AND SOLID FOOTREST SYSTEM

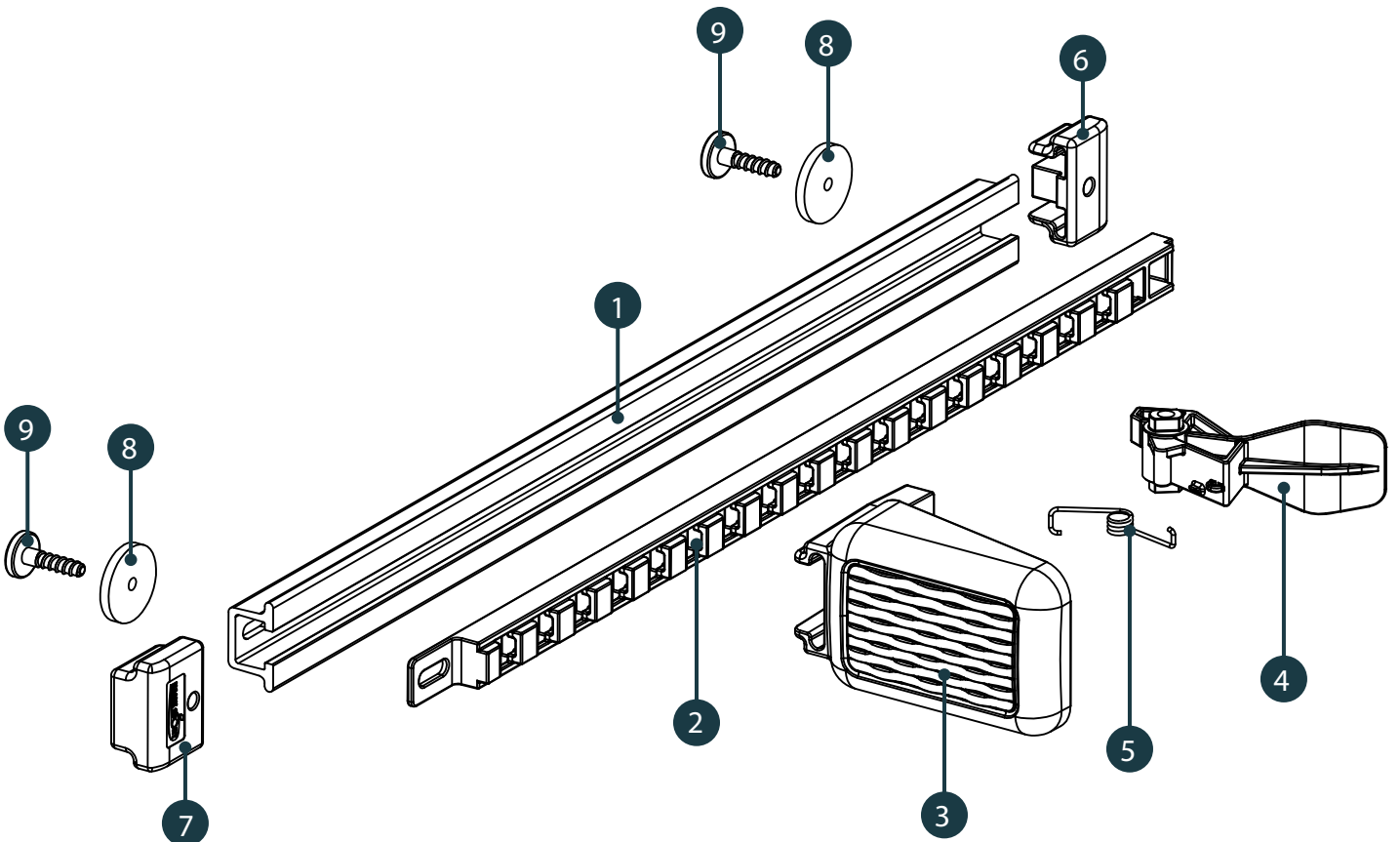


KS FOOTREST 3, ALUMINIUM - PART LIST

Parts

514150 KS-footrest 3, aluminium

- | | |
|-----------|---|
| 1. 514152 | KS-footrest 3, rail, aluminium |
| 2. 514154 | KS-footrest 3, rail insert for aluminium |
| 3. 514114 | KS-footrest 3, pedal |
| 4. 514116 | KS-footrest 3, pedal lock |
| 5. 514118 | KS-spring for footrest 3 pedal lock |
| 6. 514156 | KS-footrest 3, rail end front |
| 7. 514158 | KS-footrest 3, rail end rear |
| 8. 501116 | Foam Washer |
| 9. 475620 | PT-Screw, big head, Hexacon, A4 6,2 x 20 mm |



ASSEMBLY INSTRUCTIONS

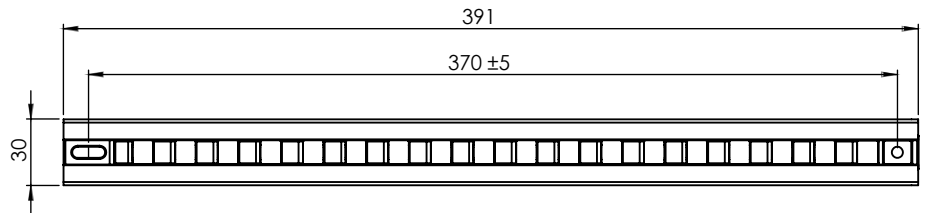
Mounting distance

Kajak Sport footrest 3 mounting distance is the industry 'standard'.

Distance is the same as other Kajak Sport footrest models as well as most of the other footrest systems world wide.

It makes replacing of an old or broken footrest easy.

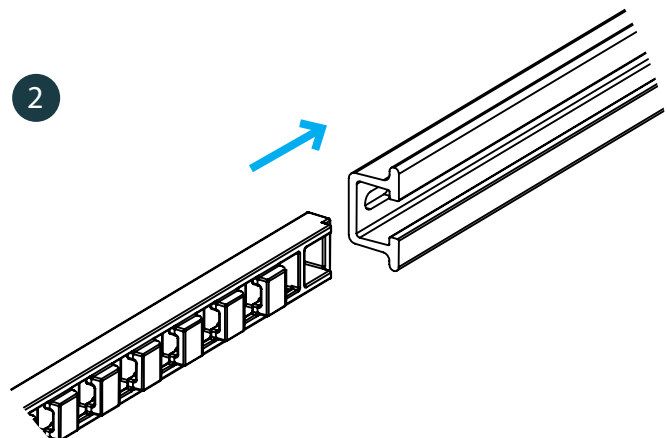
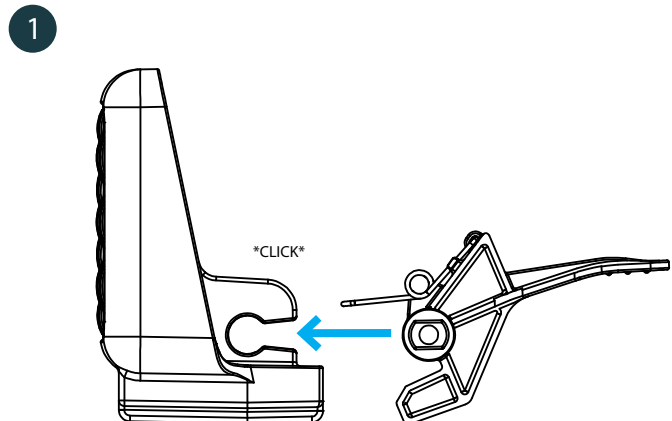
Rear mounting hole is made oval to generate extra tolerance in the mounting distance. 370 mm (± 5 mm).



Assembling the KS Footrest 3, pedal lock in to the pedal

1. Push the pedal lock into a special slot in the back of the foot pedal (shown in the drawing). The spring is preassembled to the pedal lock.

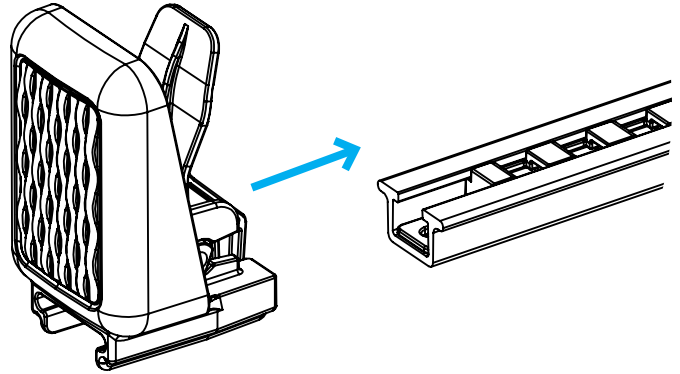
2. Slide the plastic rail insert inside into the aluminium rail (oval hole closer to the paddler).



KS FOOTREST 3, ALUMINIUM - ASSEMBLY INSTRUCTIONS

3. Slide the footrest pedal into the rail.
Keep the pedal lock pushed against the
pedal for free movement.

3



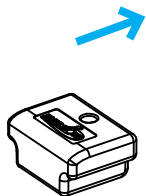
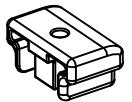
4. Insert the rail end parts.

a. Rail end part 4A goes into a slot
in the rail insert (further from the
paddler).

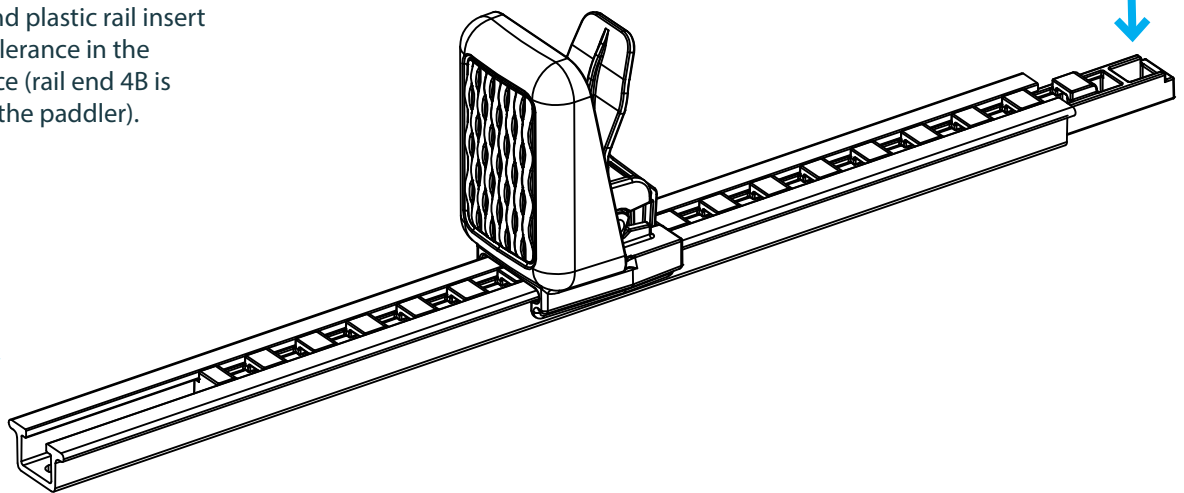
b. Rail end part 4B slides between
the aluminium and plastic rail insert
allowing some tolerance in the
mounting distance (rail end 4B is
located closer to the paddler).

4

4A



4B



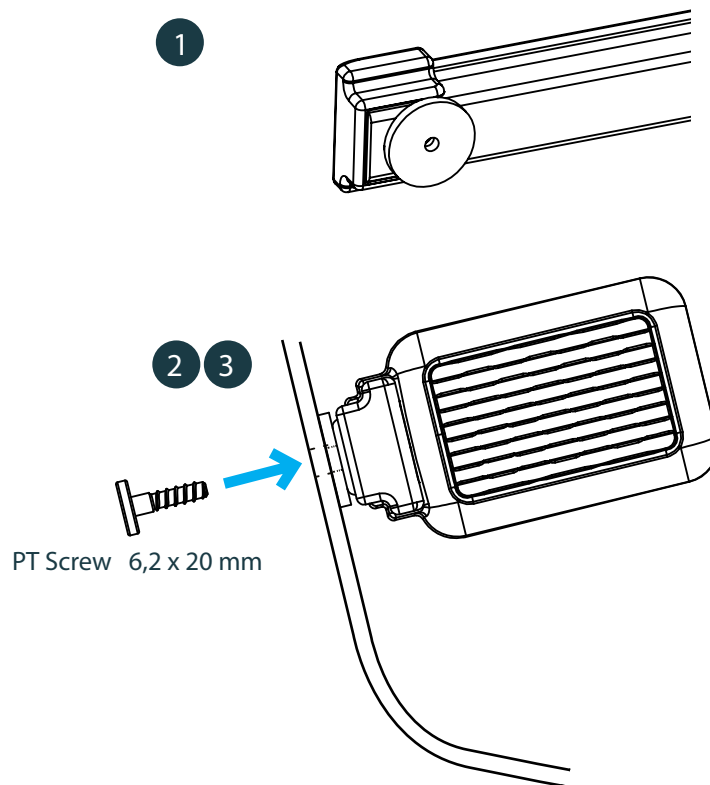
ATTACHING THE FOOTREST INTO THE KAYAK

A. Standard screw attaching through the hull.

1. Add foam washer in the back side of the rail. Foam washer is self-adhesive.

2. Drill the holes from outside of the kayak. First drill the other end and use the rail as a template to determinate the second hole in correct position and distance.

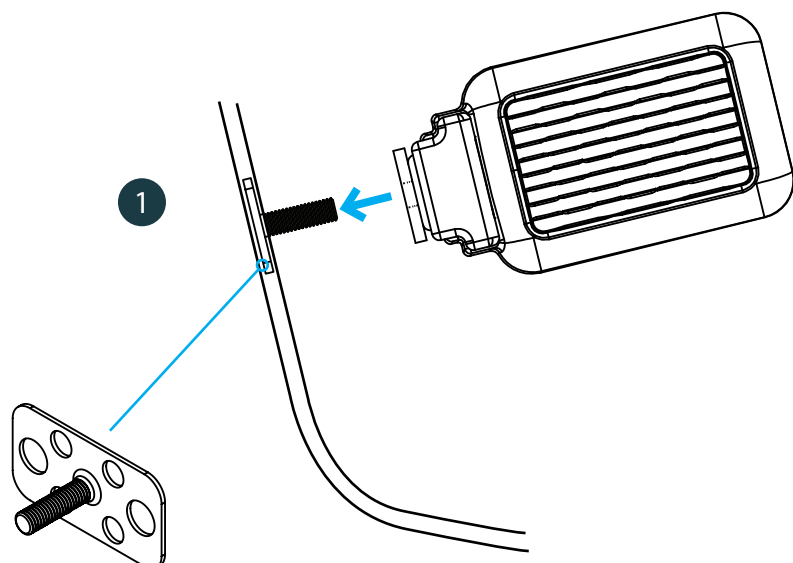
3. Attach the footrest with 6,2 x 20 mm PT screw.



B. Optional attachment with KS-fastener 5/25 (501117)

1. Laminate the optional KS-fastener inside of the kayak hull.

Note: When replacing an old footrest system with prelaminated fasteners, fiberglass and resin may obstruct the fastener screw roots, preventing proper rail alignment against the hull or making screws seem too short. To resolve this, chamfer or enlarge the rail holes to increase clearance.



USAGE

KS Footrest, aluminium 3 usage

1. Push the pedal lock against the foot pedal (spring loaded) to move the pedal freely.

