

# KS FOOTREST 3

LIGHT AND COMFORTABLE FOOTREST SYSTEM



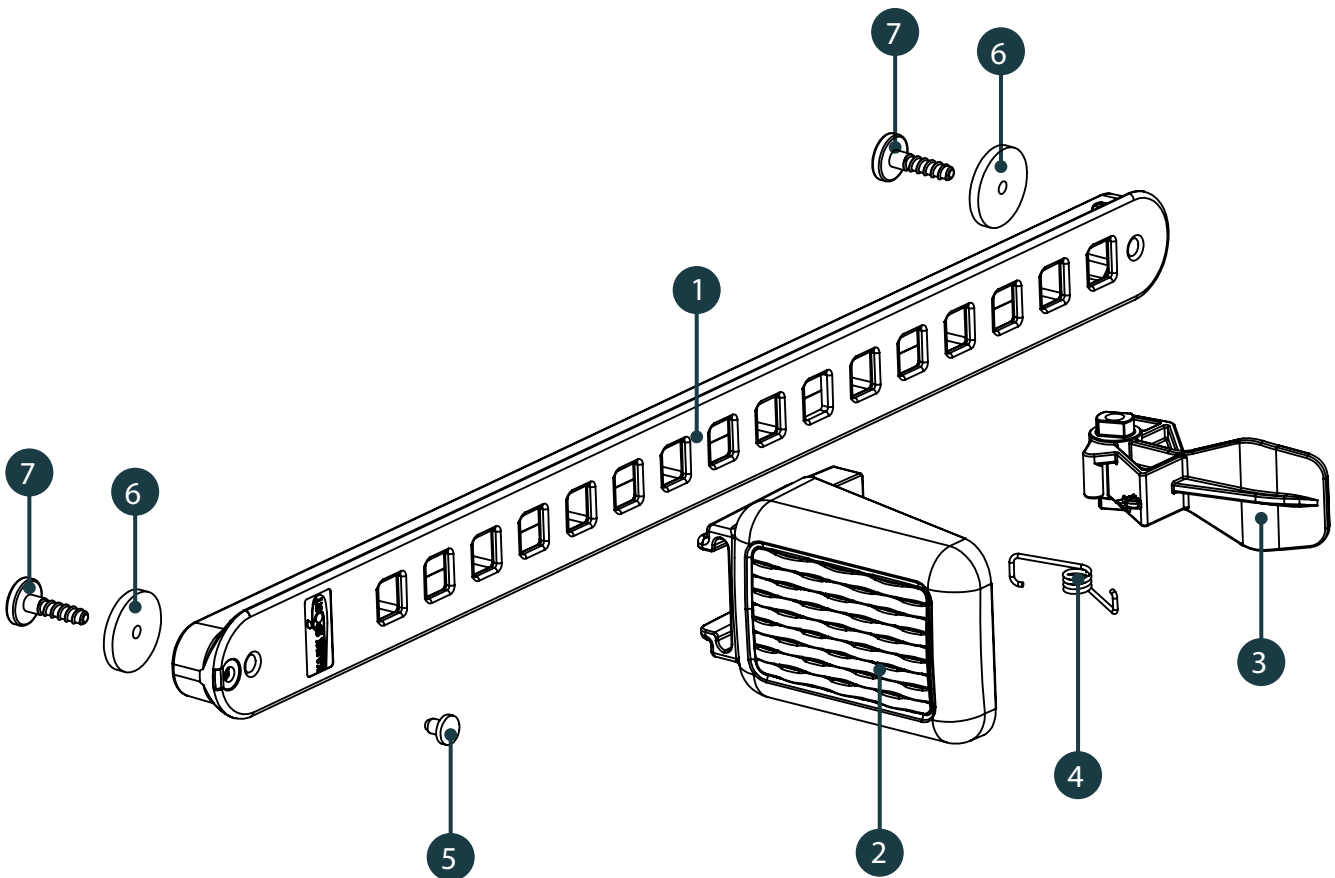
## KS FOOTREST 3 - PART LIST

---

## Parts

### 514150.1 KS-footrest 3

- 1. 514112 KS-footrest 3, Rail
- 2. 514114 KS-footrest 3, pedal
- 3. 514116 KS-footrest 3, pedal lock
- 4. 514118 KS-spring for footrest 3 pedal lock
- 5. 514119 Plastic plug for footrest 3, rail
- 6. 501116 Foam Washer
- 7. 475620 PT-Screw, big head, Hexacon, A4 6,2 x 20 mm



---

# ASSEMBLY INSTRUCTIONS

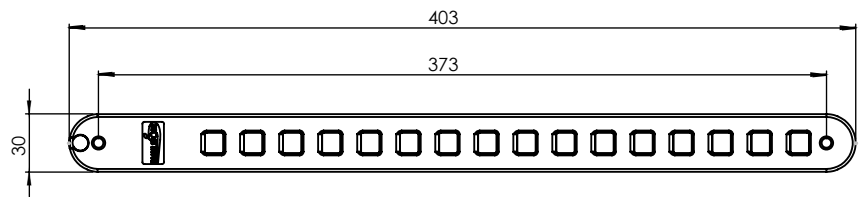
---

## Mounting distance

Kajak Sport footrest 3 mounting distance is the industry 'standard'.

Distance is the same as other Kajak Sport footrest models as well as most of the other footrest systems world wide.

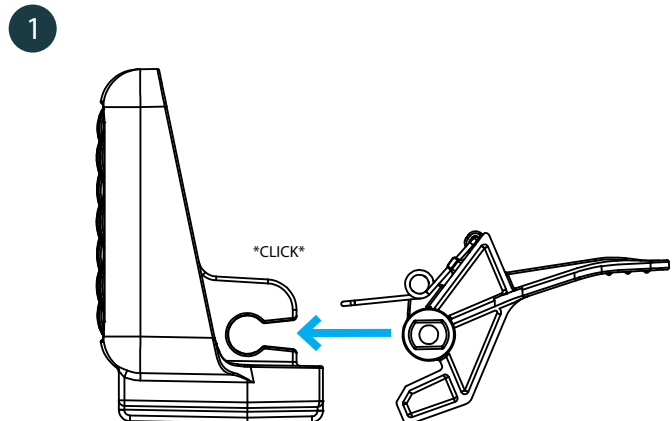
It makes replacing of an old or broken footrest easy.



---

## Assembling the KS Footrest 3, pedal lock into the pedal

1. Push the pedal lock into the special slot in the back of the foot pedal (shown in the drawing). The spring is preassembled to the pedal lock.



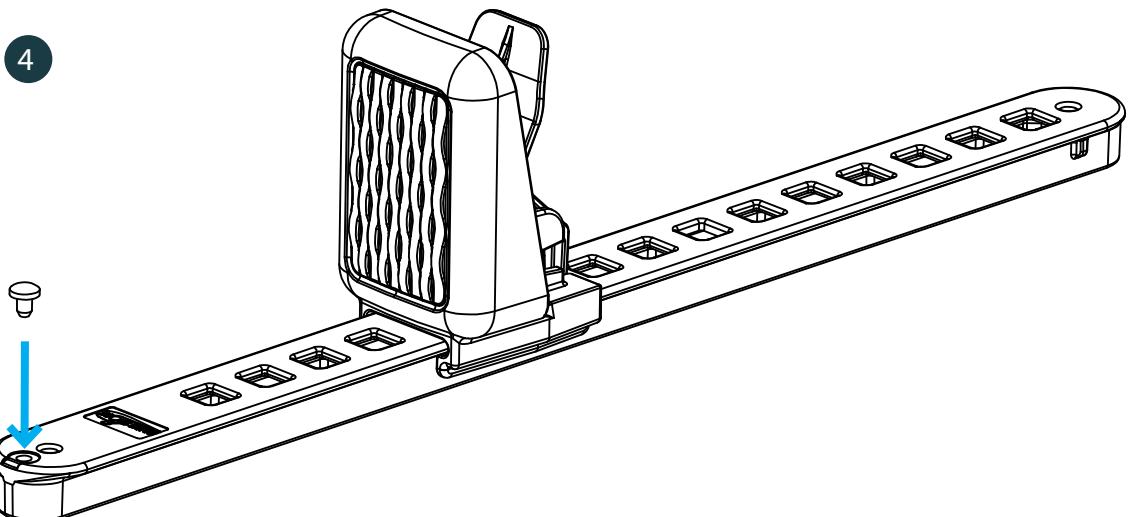
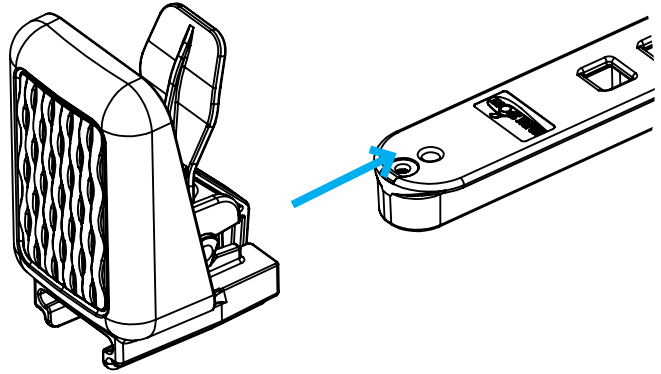
## KS FOOTREST 3 - ASSEMBLY INSTRUCTIONS

---

3. Slide the footrest pedal into the rail. Keep pushing the pedal lock against the pedal for free movement.

3

4. Push the plastic plug into the hole in the end of the rail. (the smaller hole next to the attachment screw hole). The plug prevents the pedal from sliding off the rail yet it's easily removable for maintenance.



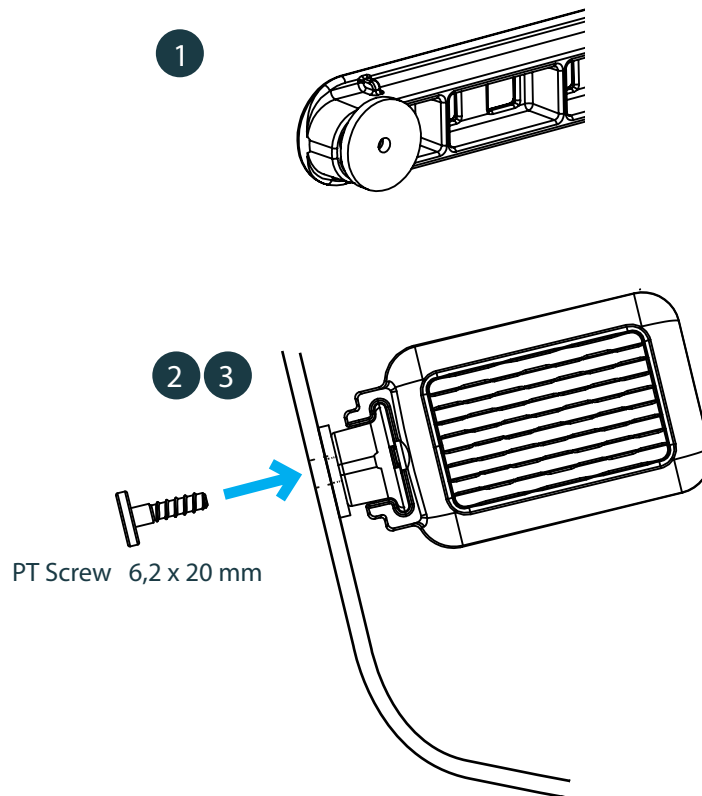
# ATTACHING THE FOOTREST INTO THE KAYAK

## A. Standard screw attaching through the hull.

1. Add foam washer in the back side of the rail. Foam washer is self-adhesive.

2. Drill the holes from outside of the kayak. First drill the other end and use the rail as a template to determinate the second hole in correct position and distance.

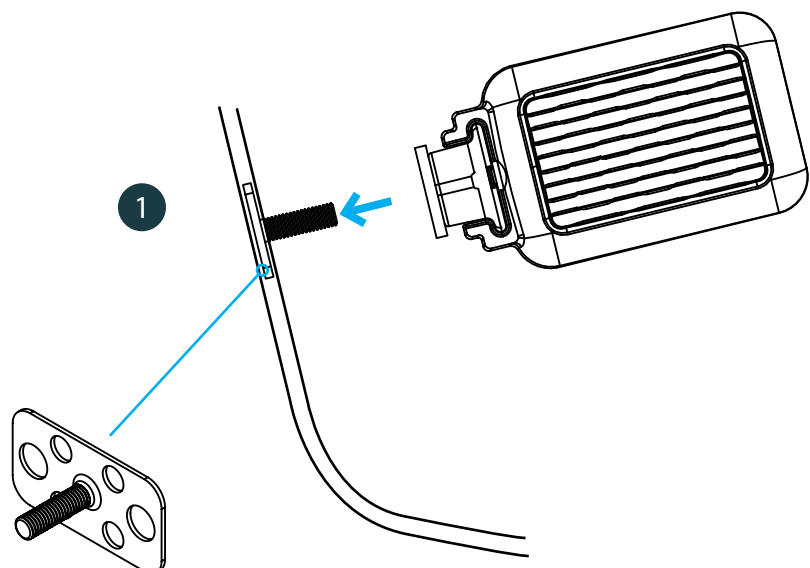
3. Attach the footrest with 6,2 x 20 mm PT screw.



## B. Optional attachment with KS-fastener 5/25 (501117)

1. Laminate the optional KS-fastener inside of the kayak hull.

Note: When replacing an old footrest system with prelaminated fasteners, fiberglass and resin may obstruct the fastener screw roots, preventing proper rail alignment against the hull or making screws seem too short. To resolve this, chamfer or enlarge the rail holes to increase clearance.



## USAGE

### KS Footrest 3 usage

1. Push the pedal lock against the foot pedal (spring loaded) to move the pedal freely.

